



Dahlsford Grove Lifestyle Village
1-5 Greenmeadows Drive,
Port Macquarie, NSW 2444
02 6584 4480
dahlsford.com.au

ABOUT US

Dahlsford Grove Lifestyle Village

Multi award-winning Dahlsford Grove is Australia's premier Lifestyle Village. Located in the heart of Port Macquarie on the Mid North Coast of NSW a region famous for its congenial climate, natural beauty and relaxed, coastal living.

Dahlsford Grove has been created with great attention to detail. Everything has been painstakingly considered to give you the best possible combination of facilities and freedom to choose your preferences.

The professional team looking after your interests is dedicated to your contentment. They find their satisfaction in your smiles of approval.

Dahlsford Grove is close to many attractions that bring visitors from all over the world. Meticulously designed for people over 50, it is the natural choice for those who want a secure, private community with a superior quality of life at an affordable price.



Dahlsford Grove has superbly-maintained leisure facilities for active bodies and minds and a friendly, social life for those who just want to relax with good company. Take a dip in the huge, heated, indoor pool or join in a range of organised activities, catering for all tastes. Or you can relax with a good book from the library, watch a movie or enjoy a game of carpet bowls.



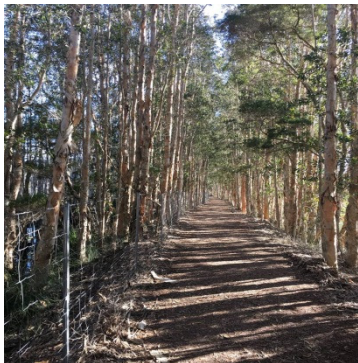
We love it, moved into the village in 2002
It's the best thing we could have done at our age.
The village is well maintained
great facilities great staff
lovely neighbours and a very safe place.

Wally & Mia

FEATURES

Dahlsford Grove has been designed to provide you with peace of mind. A high security perimeter fence surrounds the entire estate. Entry via the front gates after hours is by security coded electronic key. A remote voice system at the entry allows visitors to contact you on your home phone to verify their identity before you open the gates for them. It's reassuring to know you're safe.

Block sizes are generous. That gives a lot of scope for individual residents to express their good taste. And you will notice that the standard of presentation is very high at Dahlsford Grove. There is an evident pride in the way people tend their, often remarkable, surrounds. Houses are set well back from the street allowing a sense of spaciousness and freedom to move. A stroll along one of the many leafy avenues is a memorable experience



It's a wonderful village in which to live and always something going on. Also we have a very caring and efficient management/ownership

Denny



FACILITIES



Residents and their guests enjoy a wide range of world-class facilities including a large, heated, indoor, swimming pool, lawn bowling green, pool tables, library, dining facilities, dance floor, men's shed, resident hairdresser and visiting doctor — and much more.

All the facilities at Dahlsford Grove have been designed to bring the maximum enjoyment to its residents.



Everything is well designed and built to last. The sense of order and care is not accidental. Dahlsford Grove is privately owned and operated by one family who grew up on the property. There is a depth of commitment here that you won't find in other villages and it shows.

Nothing is done by halves. There is a feeling of spaciousness that allows for privacy and at the same time permits the level of social engagement you naturally prefer. This has come about by careful planning and attention to the big things as well as all the fine details. It's a principle that's applied to everything at Dahlsford Grove.



We moved here 2 and a bit years ago and are really enjoying life. Everything one could need right here on hand.
Very helpful management.

Geoff

F.A.Q.

What is a Lifestyle Village?

Dahlsford Grove Lifestyle Village is a land lease community for the over 50's where you own the home but lease the land on which the home sits from the community operator. The village provides a safe and secure environment while maintaining your independence, privacy and quiet enjoyment of your home with reasonable access to all common areas.

Who Owns Dahlsford Grove?

The village is owned and operated by a local family who are friendly and approachable.

Who Owns the Homes?

The Homes are owned by the resident and are separate with their own garden and fenced from the neighbours. Car accommodation is attached to the home.

Purchasing a home in Dahlsford Grove involves buying an existing home from an outgoing home owner.

Homes available for sale are listed on the Dahlsford web site.

Is there a Departure Fee?

No.

What Facilities & Services are there?

Large community centre with free WiFi. Well stocked library. A large heated indoor swimming pool. Tennis court. Bowling green. Practice golf green. Croquet court. Men's shed. Walking track, to name a few. A letterbox is at the front of your home serviced by Australia Post. Garbage is collected each week from the front of your home. The Doctors surgery is open Thursday mornings. The hairdressing salon is open 3 days a week.

Storage is available for Caravans & Trailers. The village bus has day trips organised regularly.

In-House TV provides updates of what's on in the village and what events are coming up.

Can I have visitors and guests?

Visitors are most welcome and encouraged for overnight or short stays.

Children must have resident supervision at all times in common areas including the walking trails and swimming pool. No children's bikes, skates, roller blades, skateboards or similar to be used in or on community areas.

Can I have pets?

You may keep fish or small caged birds in your premises at any time. No other animals (including cats or dogs) are to be kept in your premises or brought into common areas.

LOCATION



Port Macquarie

Port Macquarie is on the Mid North Coast of New South Wales, Australia, about 390 km north of Sydney. It is located on the East Coast, at the mouth of the Hastings River, and has a population of over 45,000.

Dahlsford Grove provides the best facilities for a truly wonderful lifestyle and Port Macquarie offers a delightful menu of options including beautiful, unspoiled beaches with headlands stretching into the distance, rivers that meander for miles and miles, mountain ranges with some of Australia's most picturesque waterfalls and rainforests nestled among rolling, green meadows. It is all so conveniently located midway between Sydney and the Queensland border.

Beyond the cares and bustle of the rat race, there are vineyards offering sumptuous dining to laze away carefree, sunny afternoons. The sheltered harbour and sparkling waterways, meandering all the way to the clear, blue hills, await your pleasure. Paved walkways hug the coast for miles and provide perfect vantage points to watch the migrating whales as they breach close by. A day never passes without pods of playful dolphins charming the senses.

Port Macquarie is a major tourist destination and is well known for its extensive beaches and waterways as well as the Koala Hospital, caring for koalas injured through bushfire, dog attacks and collisions with vehicles.

